

"FS PUMPS" Marine Self-priming Pump for Seawater

- Specially designed for use with seawater.
- Pump and motor are constructed to withstand seawater and operated by DC 24 V power source.
 1. Seawater proof motor: These motors are specially designed for seawater applications.
 2. Special aluminum compound for motor casing is made to withstand seawater corrosion.

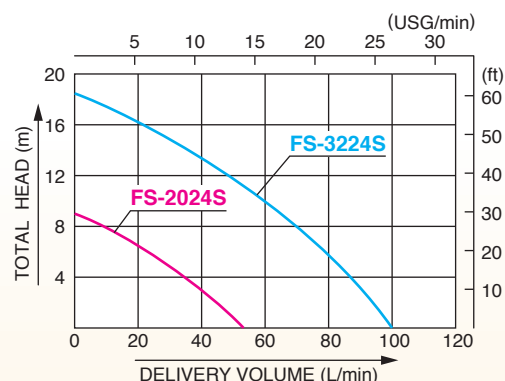


FS-3224S

Specifications

	Model	FS-2024S	FS-3224S
PUMP	Connection Dia	20 mm (¾")	32 mm (1¼")
	Connection Thread	Inner Pipe Thread	
	Total Head	9 m (30 ft)	18.5 m (60 ft)
	Delivery Volume	50 L/min (13 USG/min)	100 L/min (26 USG/min)
MOTOR	Voltage	DC 24 V	
	Rated Current	7 A	16 A
	Output	90 W / 7000 rpm	200 W / 6200 rpm
	Rating	Continuous	
	Power Cord	3 m (10 ft)	5 m (16 ft)
Standard Accessories	1 Strainer, 2 Hose Nipples, 1 Set Carbon Brush		
Net Weight	4.5 kg (10 lbs)	7.8 kg (17 lbs)	
Gross Weight	28.5 kg (62.8 lbs)	28 kg (62 lbs)	
Dimensions LxWxH (mm)	780 x 295 x 237	555 x 385 x 325	
Packing Unit	5	3	

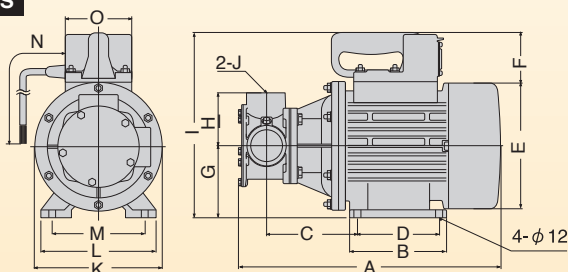
Performance Curve



OUTLINE DRAWING

REVOLVEX PUMP

MF-40MS

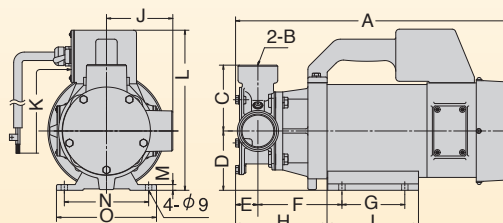


Model	A	B	C	D	E	F	G	H	I	J	K	L	M	N	O
MF-40MS	407	150	143	120	200	90	105	80	293	Rp½"	200	170	140	9700	120

RUBBER MASTER

MF-2524

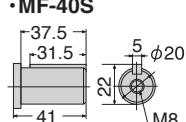
MF-4024X



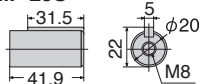
Model	A	B	C	D	E	F	G	H	I	J	K	L	M	N	O
MF-2524	281.5	Rp1"	63	60	29	119.5	66	133.5	96	63	5000	205	10	100	120
MF-4024X	386	Rp½"	95	83	31.5	118.5	88	129	128	95	5000	226.5	8	118	140

[Shaft Size]

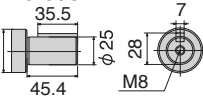
MF-40S



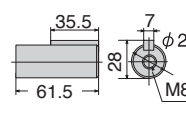
MF-25S



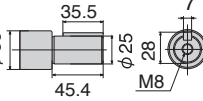
MFC-80S



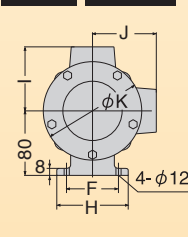
MF-50S



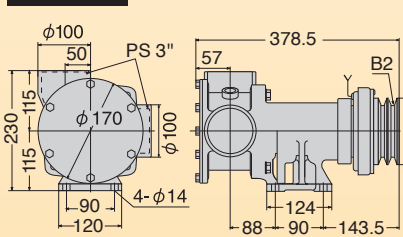
MF65 Series



MF— MFC—



MFC-80S



Model	A	B	C	D	E	F	G	H	I	J	K	L	M	N(Pulley)
MF-25S-MFC-25S	Rp1"	219(234)	60	72(864)	50	60	85	85	70	70	108	136.5	80	B1
MF-40S-MFC-40S	Rp1½"	232(247)	62.5	74(88)	55	65	90	90	80	80	123	136.5	80	B1
MF-50S-MFC-50S	Rp2"	311(335)	90.5	85.5(108.5)	80	80	105	105	95	95	123	130	91	B2
MFL(C)-65K-MFC-65K	Rp½"	384(403)	105	124.5(143.5)	90	90	120	120	115	115	170	130	115	B2